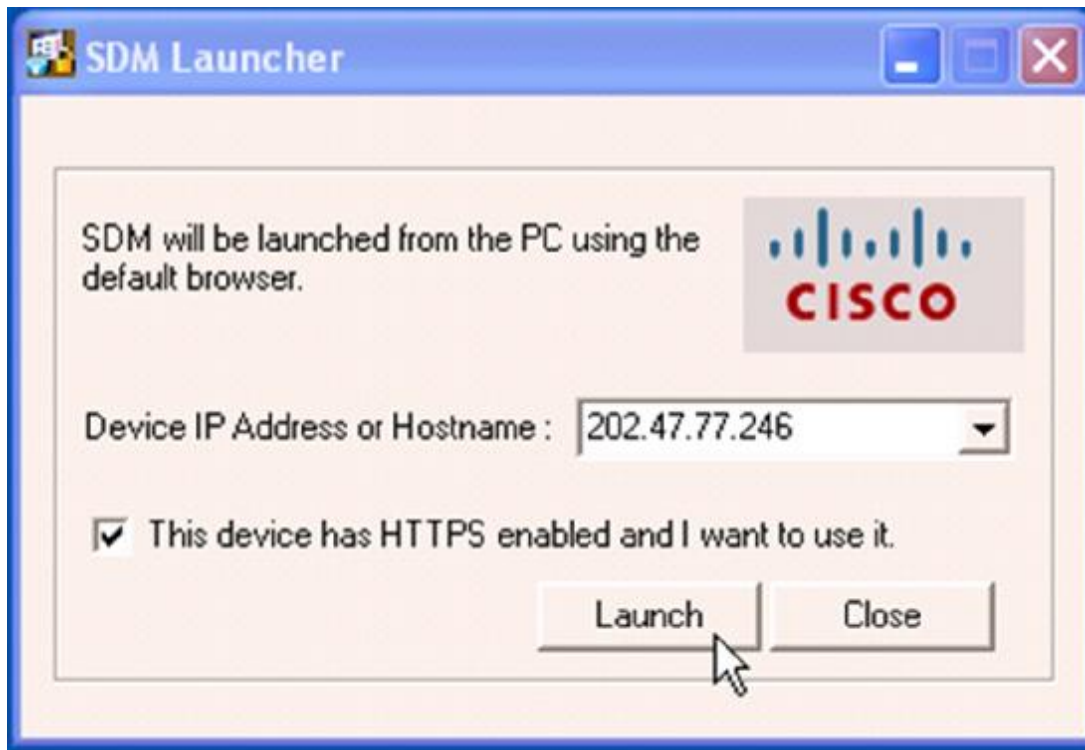


Easy VPN Server Using SDM

1. Running SDM Launcher dengan mengarahkan ke IP Address yang sudah dikonfigurasi.



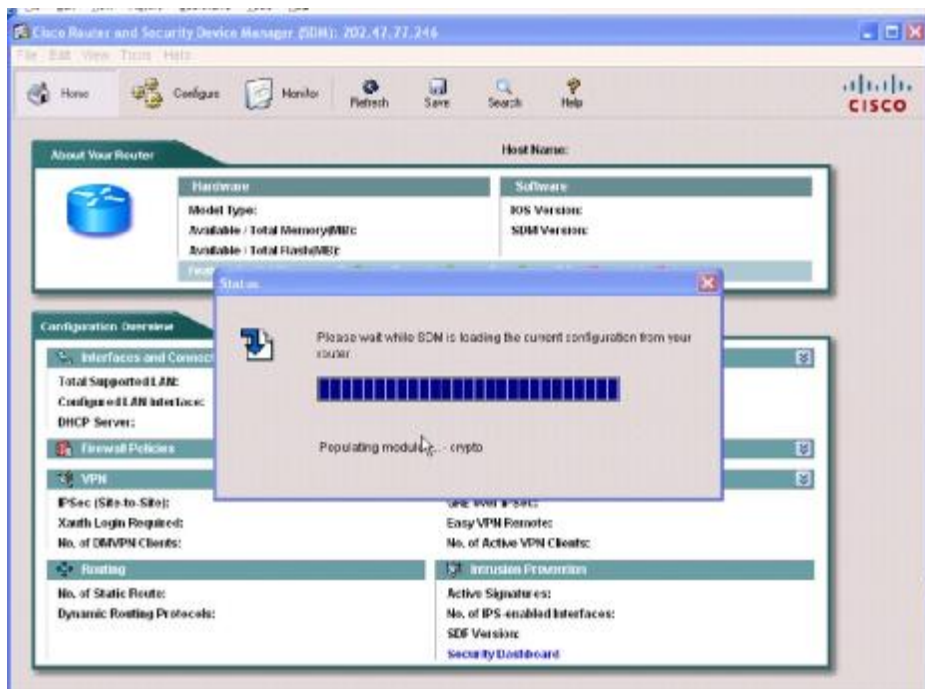
2. Authentication yang sudah dibuat dari AAA username dan password dengan level acces 15



3. Tampilan Cisco SDM ketika loading



4. Tampilan Loading Interface



5. Tampilan semua Informasi Interface yang dimiliki router

The screenshot shows the Cisco Router and Security Device Manager (SDM) interface for a Cisco 7206VXR router. The 'About Your Router' section provides hardware and software details:

Hardware		Software	
Model Type:	Cisco 7206VXR	IOS Version:	12.4(4)T1
Available / Total Memory(MB):	140/256 MB	SDM Version:	2.5
Total Flash Capacity:	72 MB		

The 'Configuration Overview' section provides a summary of the router's configuration:

- Interfaces and Connections:** 2 Total Supported LAN, 1 Configured LAN Interface, 0 Total Supported WAN, 0 Total WAN Connections. DHCP Server: Not Configured.
- Firewall Policies:** Inactive.
- VPN:** 0 IPsec (Site-to-Site), 0 GRE over IPsec, 0 Easy VPN Remote, 0 No. of Active VPN Clients.
- Routing:** 1 No. of Static Route, None Dynamic Routing Protocols.
- Intrusion Prevention:** 0 Active Signatures, 0 No. of IPS-enabled Interfaces.

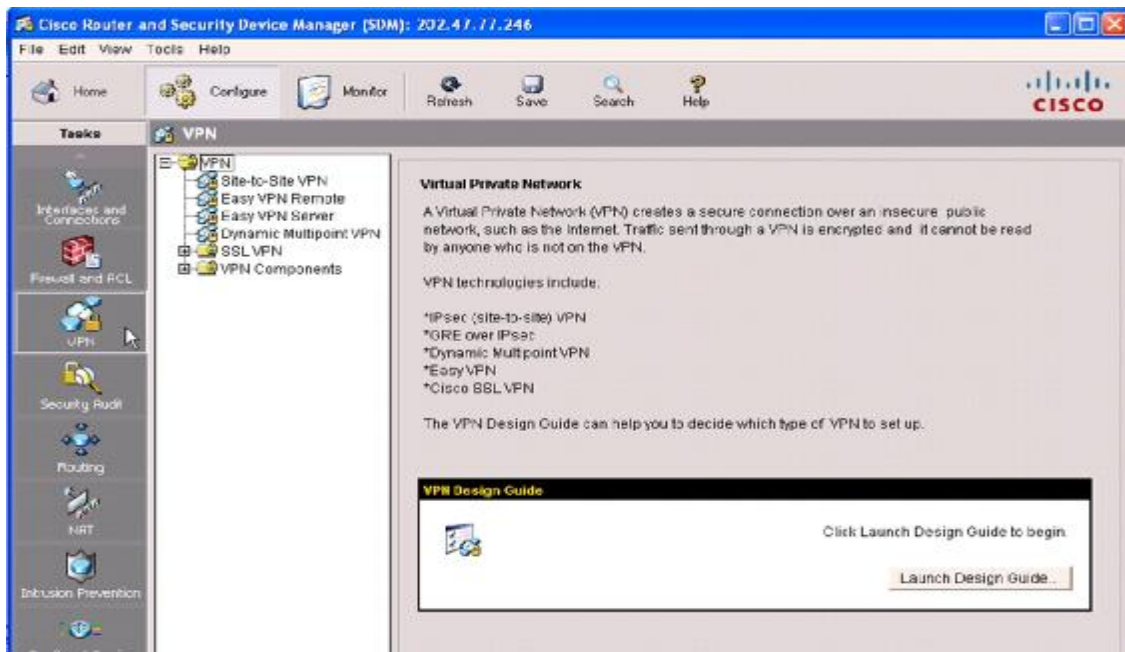
6. Tampilan Interface dan IP Address

The screenshot shows the 'Interfaces and Connections' section in the Cisco Router and Security Device Manager (SDM) interface. The 'Interface List' table displays the following information:

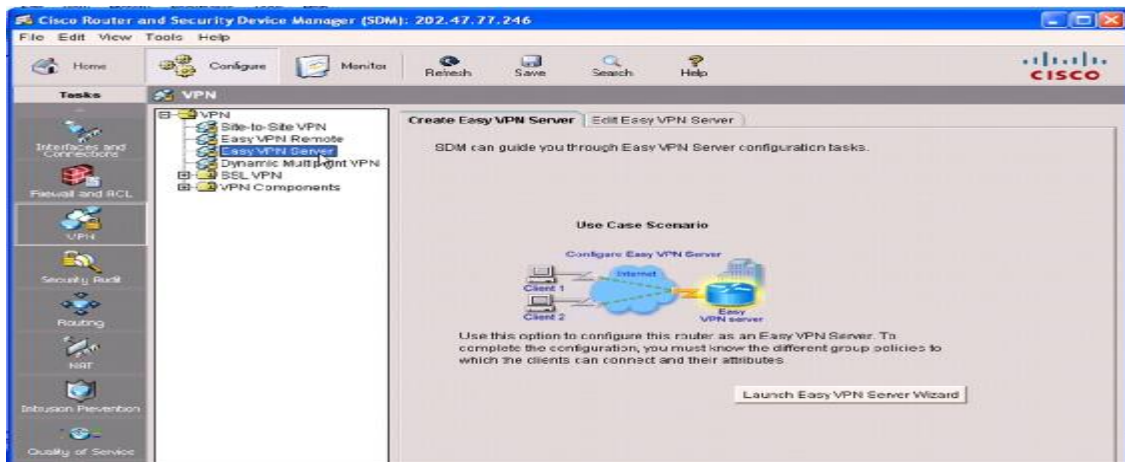
Interface	IP	Type	Slot	Status	Description
FastEthernet0/0	no IP address	FastEthernet	0	Down	
FastEthernet0/0	202.47.77.246	FastEthernet	1	Up	*** WAN ***
FastEthernet0/1	192.168.100.1	FastEthernet	1	Up	*** LAN ***

Below the table, the details for the selected interface (FastEthernet0/0) are shown as 'Administratively Up'.

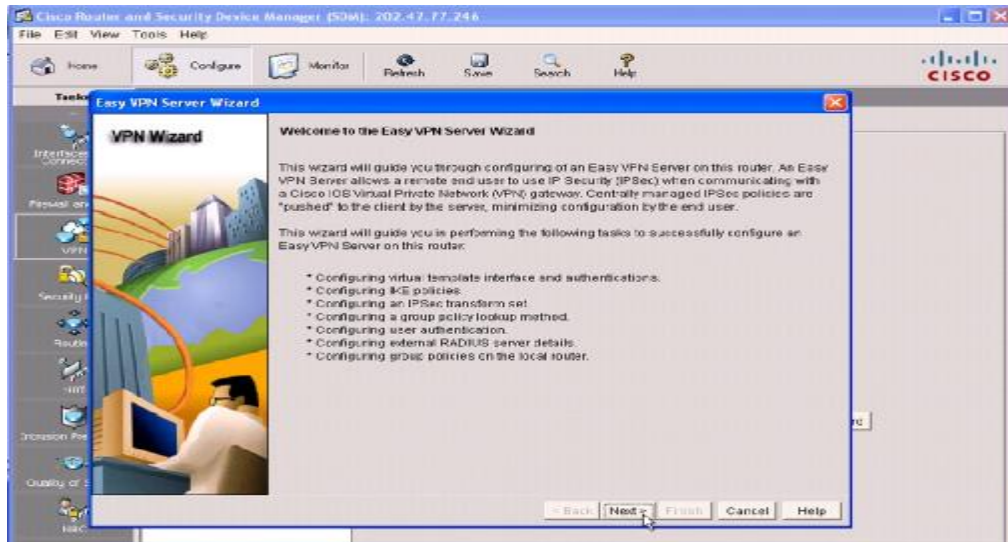
7. Pilih TAB VPN, disamping sebelah kanan



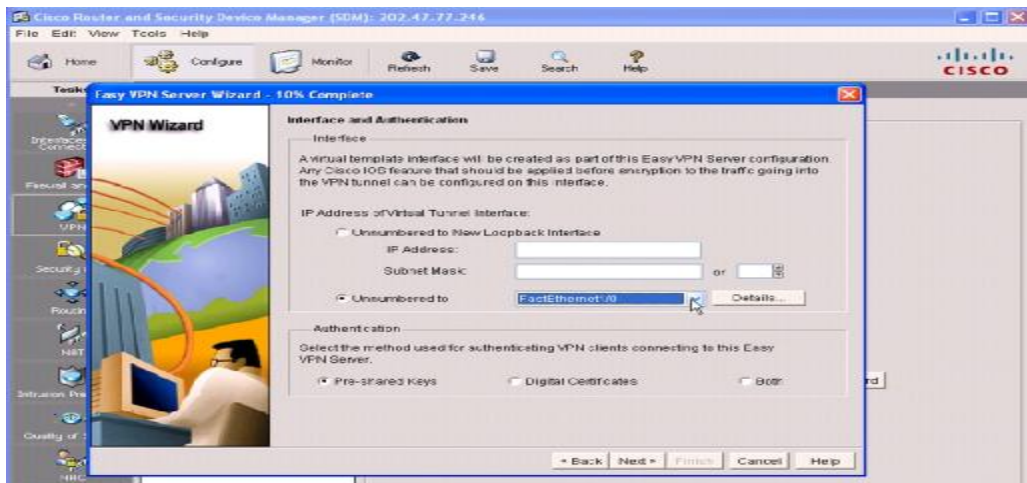
8. Pilih Easy VPN Server, Klik Launch Easy VPN Server Wizard



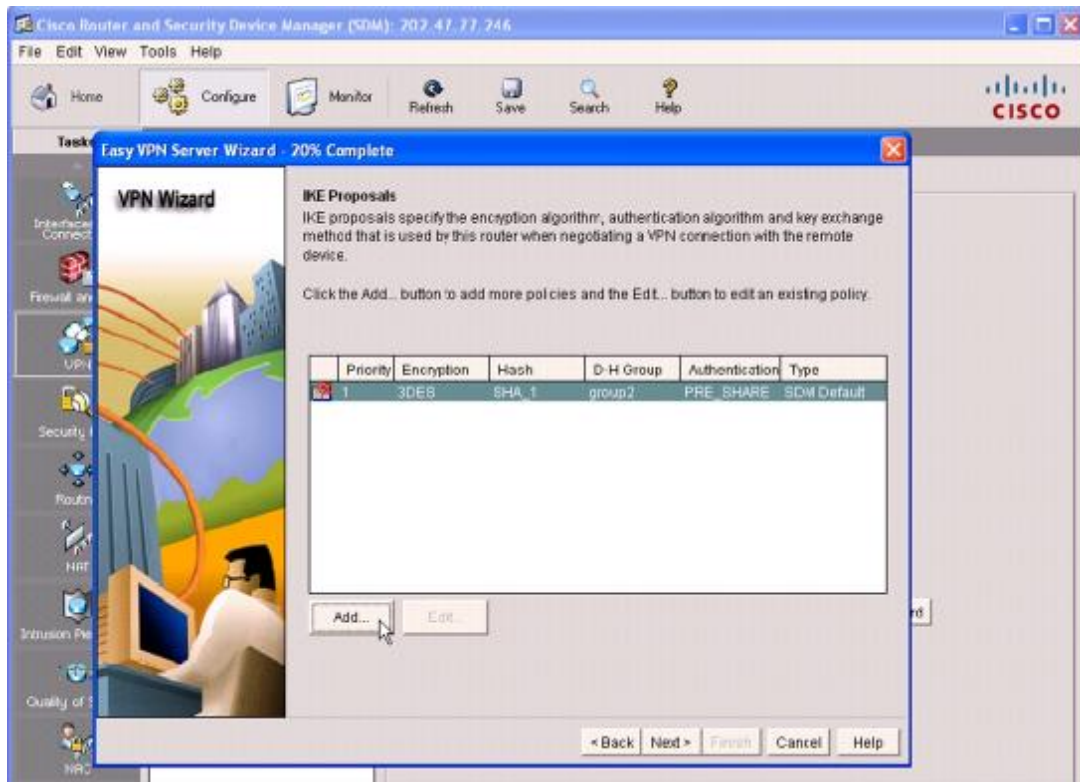
9. Tampilan Wizard Easy VPN Server, Klik Next



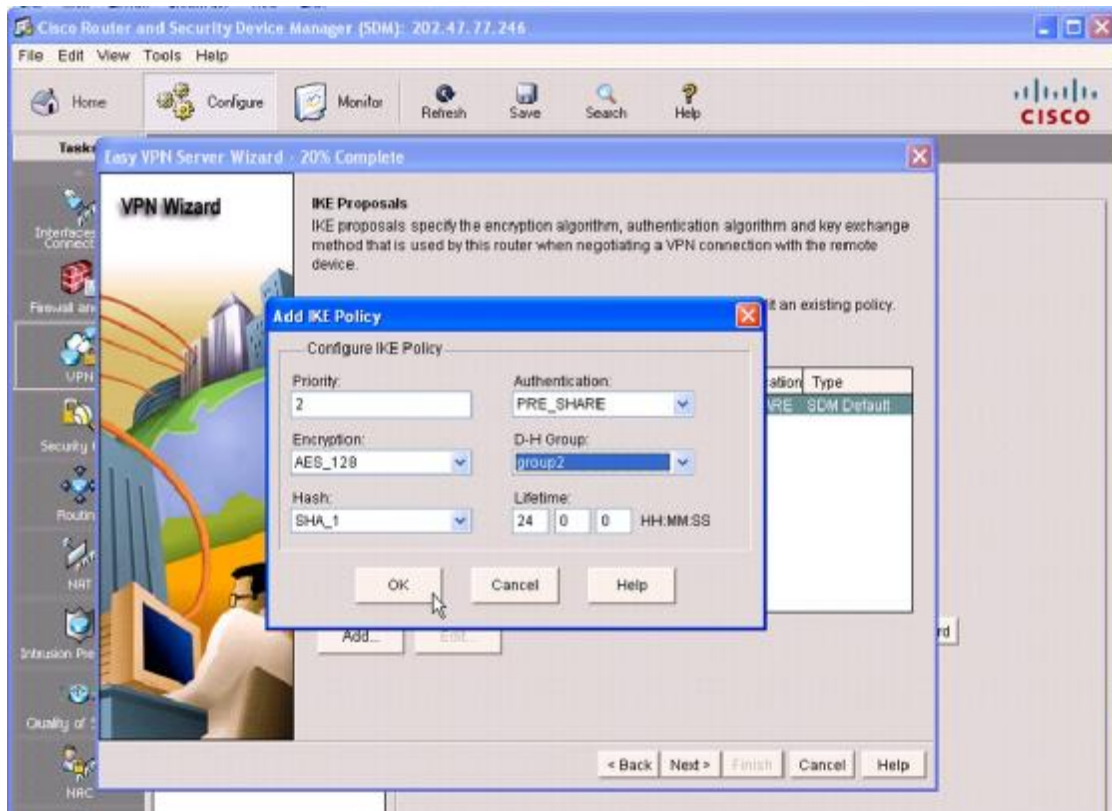
10. Tentukan Interface VPN yaitu interface WAN



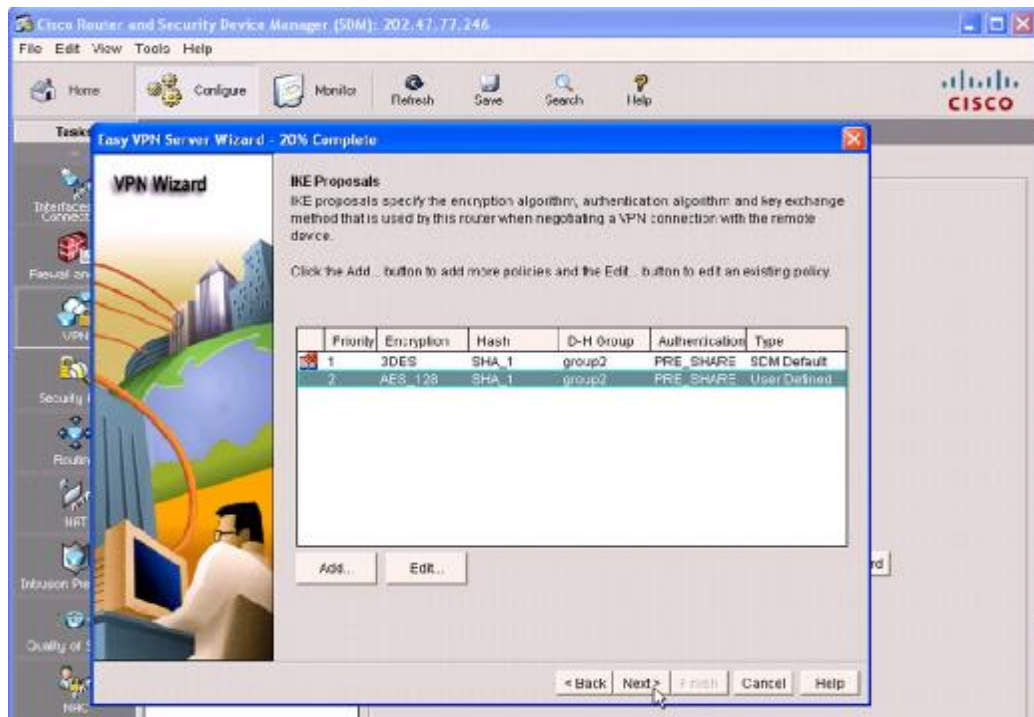
11. Tambahkan IKE, Enkripsi dan Authentikasi Algoritma, Klik Add



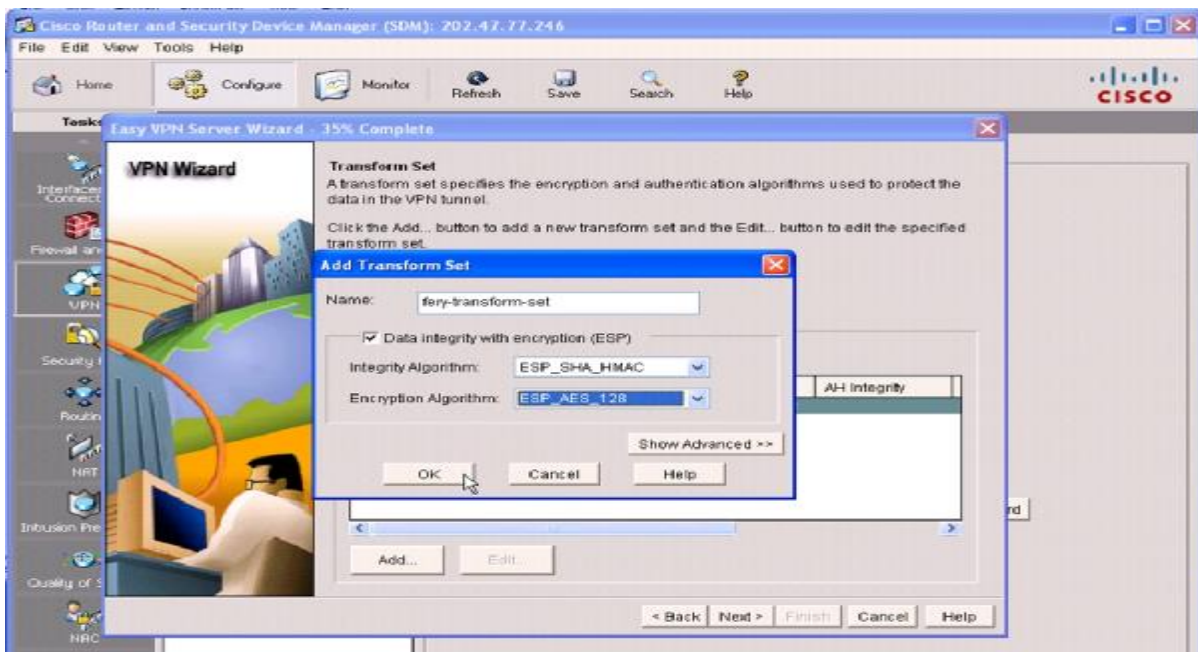
12. Tampilan memilih jenis Enkripsi, Authentikasi, Priority dan DH-Group



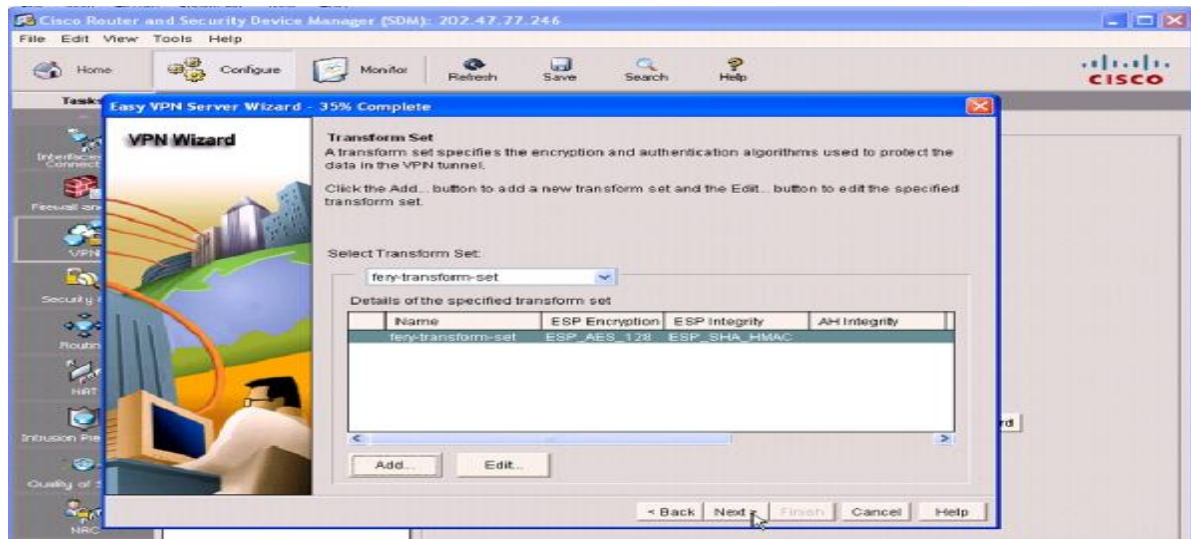
13. Tampilan Memilih Metode Enkripsi, lalu klik Add



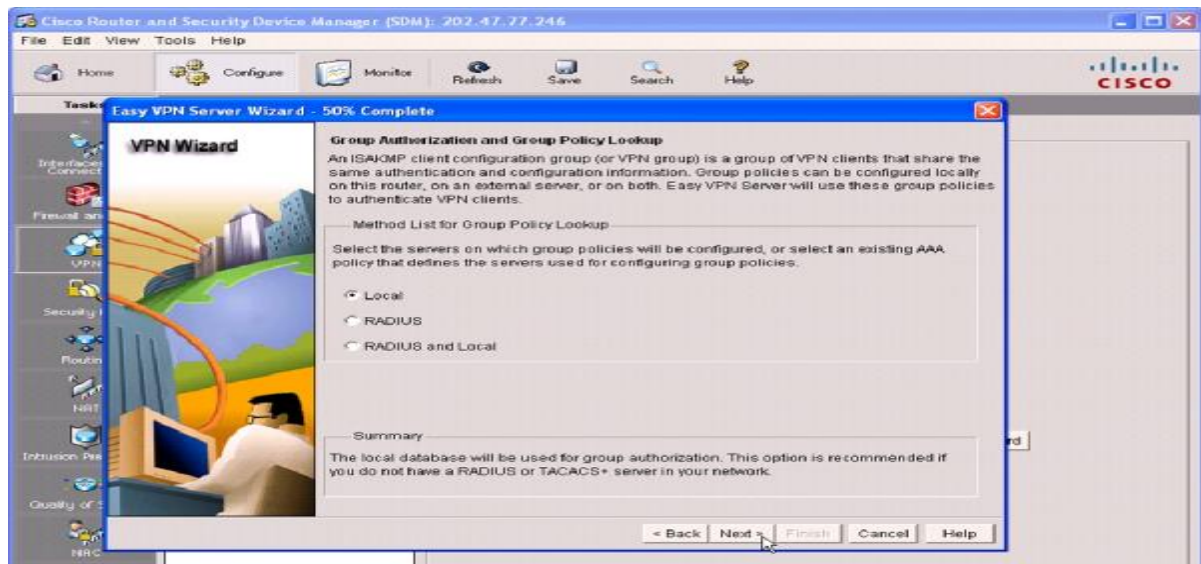
14. Tampilan Membuat Tranform Set, klik Add dan masukan seperti contoh gambar



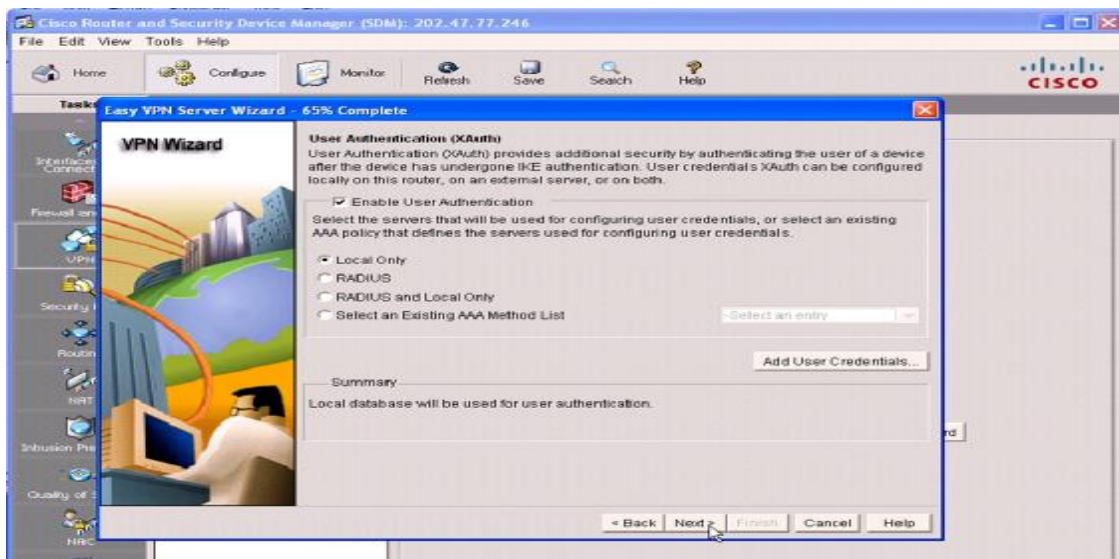
15. Tampilan Pilih Transform Set yang sudah dibuat, lalu klik Next



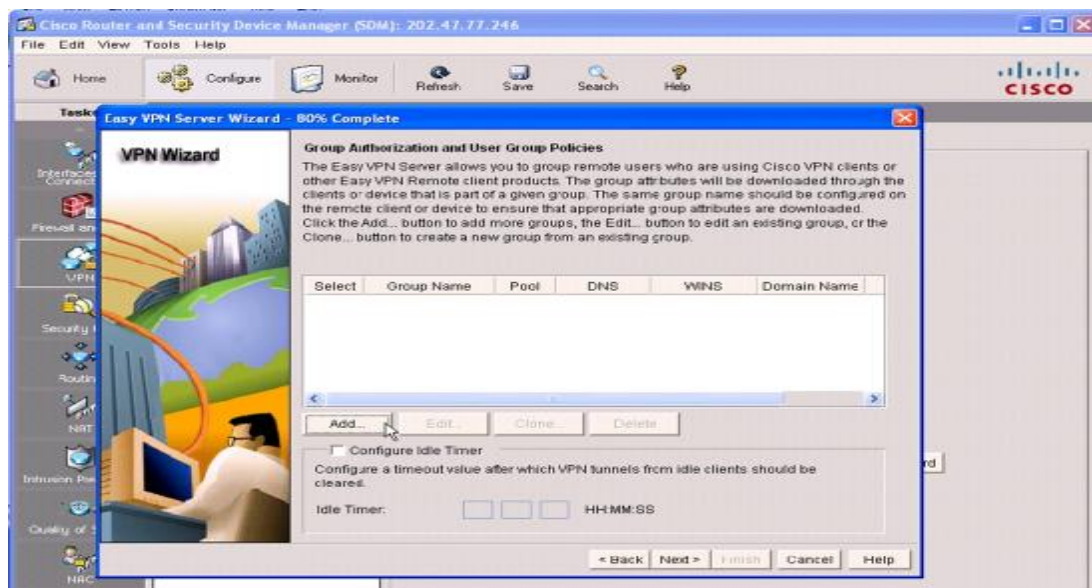
16. Pilih Group Autorisasi dengan memilih local, lalu klik Next



17. Pilih Metode Autentikasi, pilih Local Only lalu klik Next

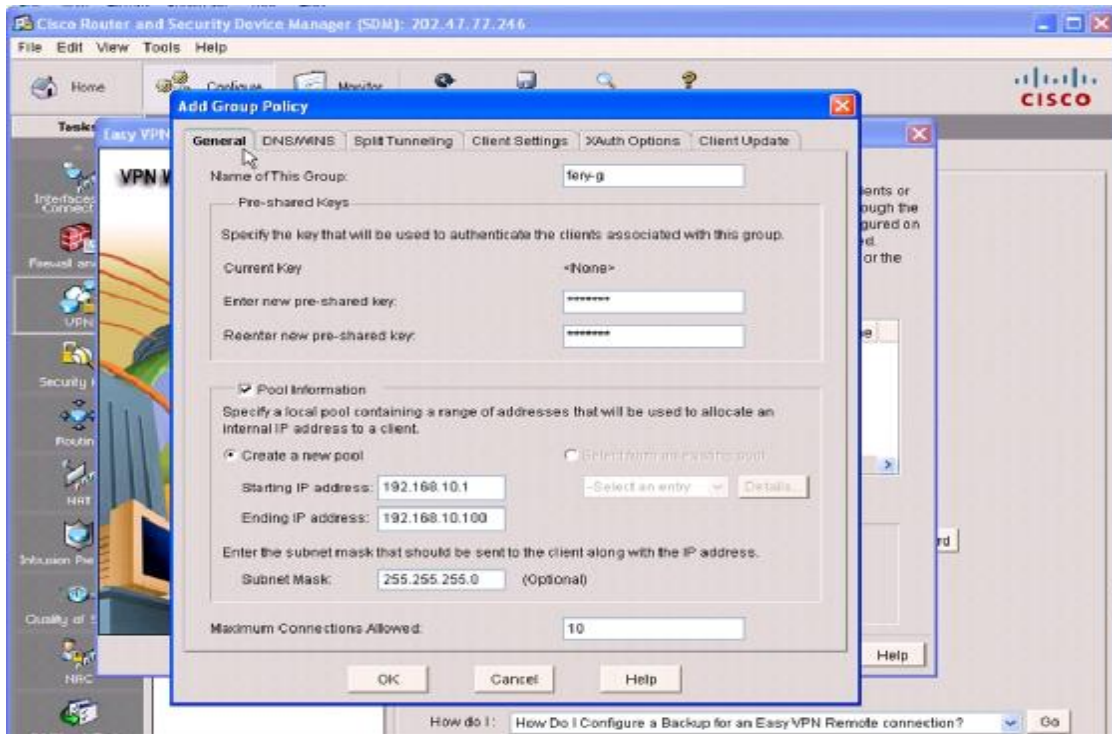


18. Tambahkan Group Autentikasi dan Group Policies, Klik Add

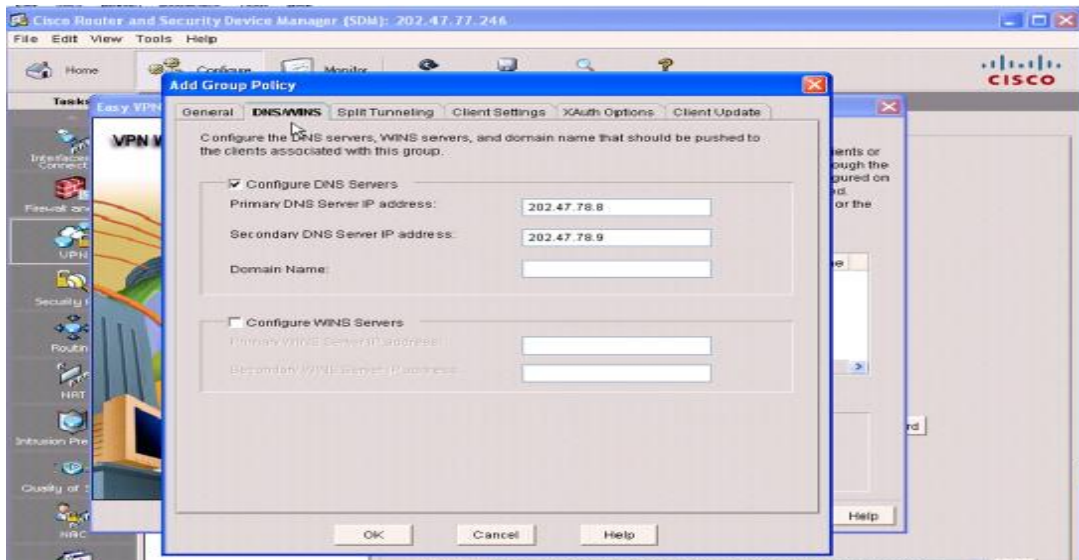


19. Tampilan Tab General masukan :

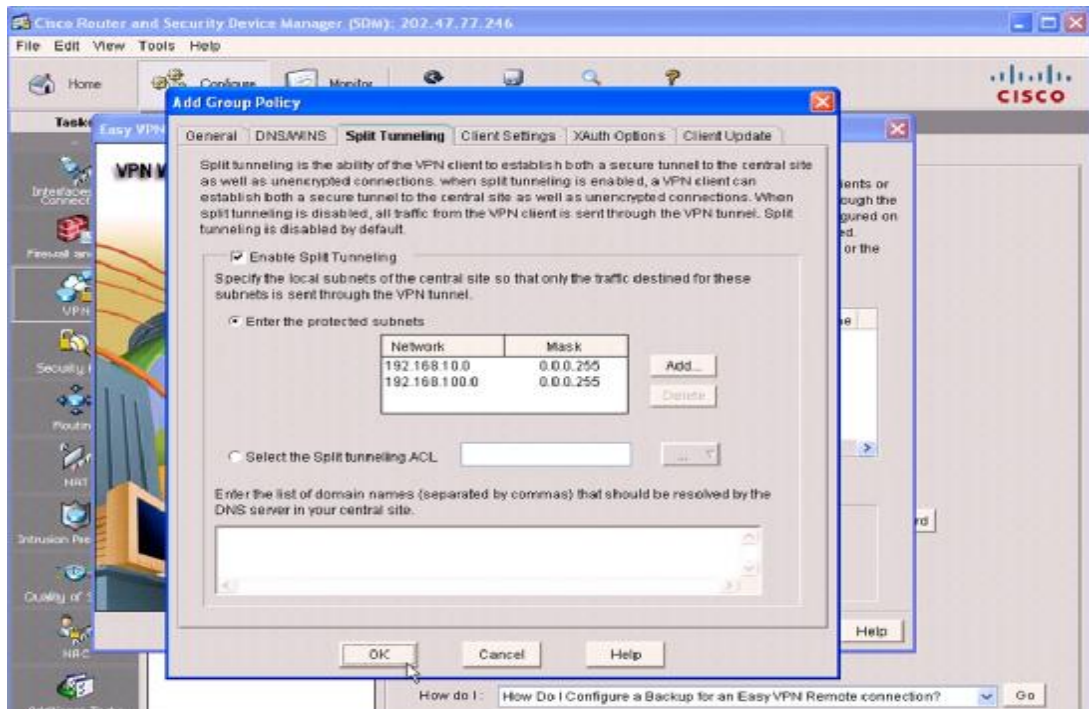
Name of this group = fery-g, pre-shared key = fery123, new pool = 192.168.10.1 - 100



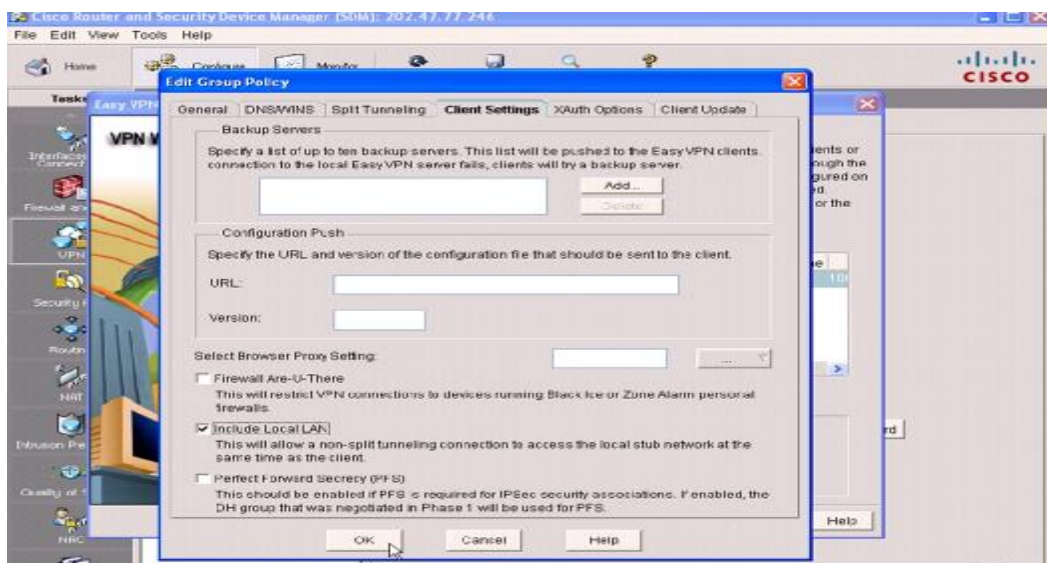
20. Tampilan Tab DNS / WIN masukan IP DNS



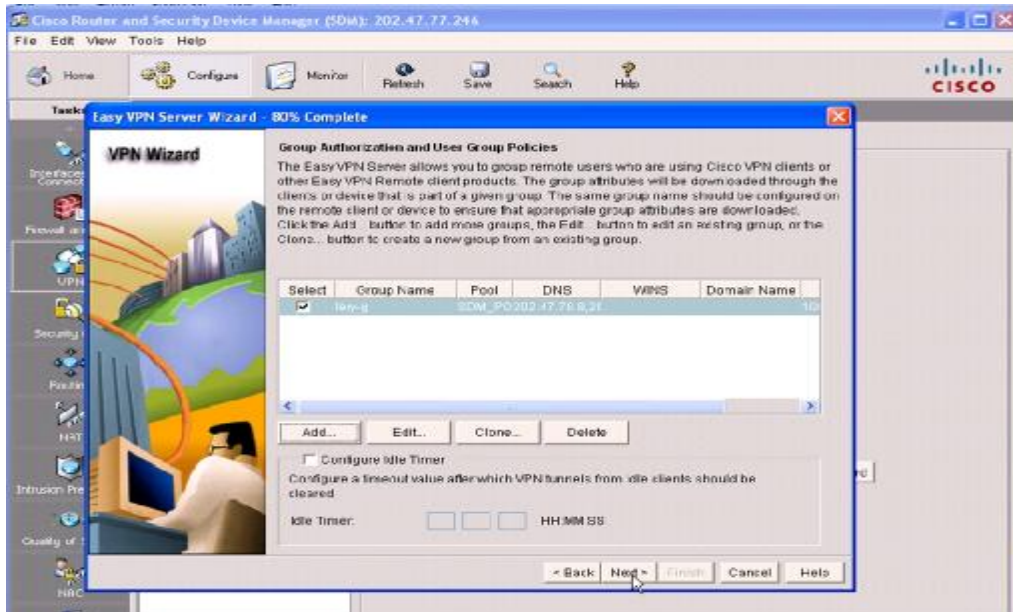
21. Tampilan Tab Split Tunneling = Add Network yang akan dienkripsi via VPN
Networknya : 192.168.10.0 dan 192.168.100.0



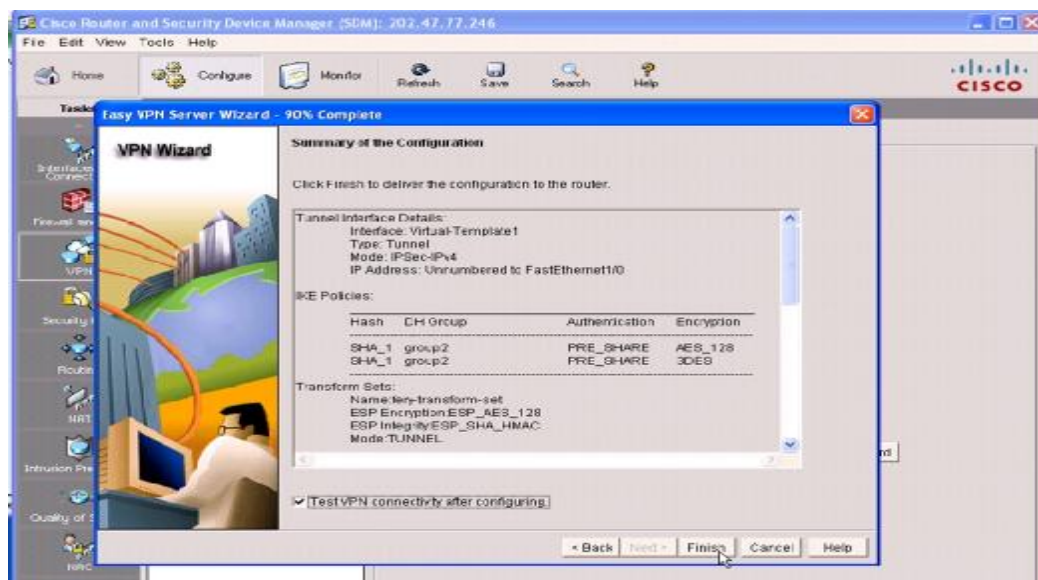
22. Setting agar ketika client terhubung ke VPN, tetap bisa mengakses jaringan LAN, Klik OK



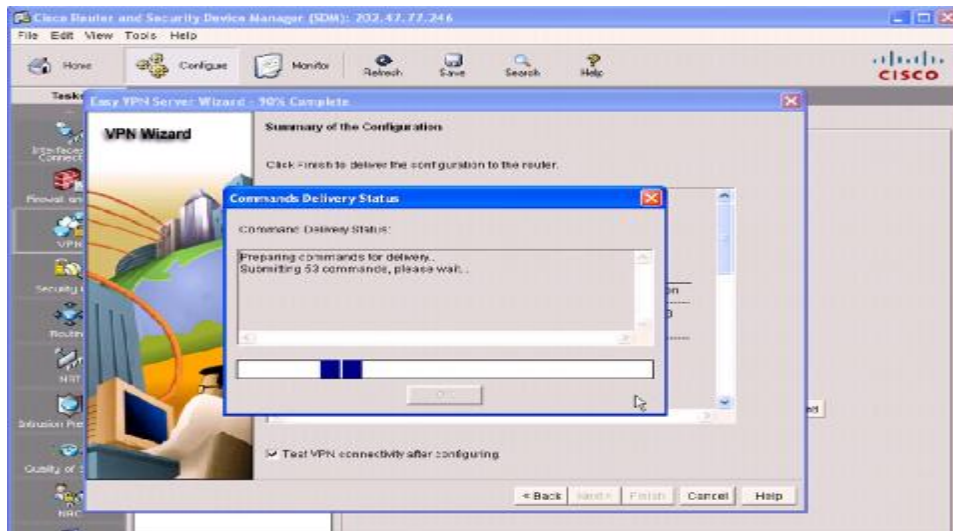
23. Group yang sudah dibuat, checking lalu pilih Next



24. Menampilkan Summary Configurasi, yang akan dikirimkan ke router, Test VPN lalu Klik Finish



25. Cisco SDM Mengirimkan Command yang di generate via GUI ke router cisco



26. Test Configurasi VPN, Untuk memastikan Bahwa Konfigurasi Sudah benar, Klik start

